

# Leicester City Council Scrutiny Review

- Sandra Roberts
- Lead Raising Achievement adviser

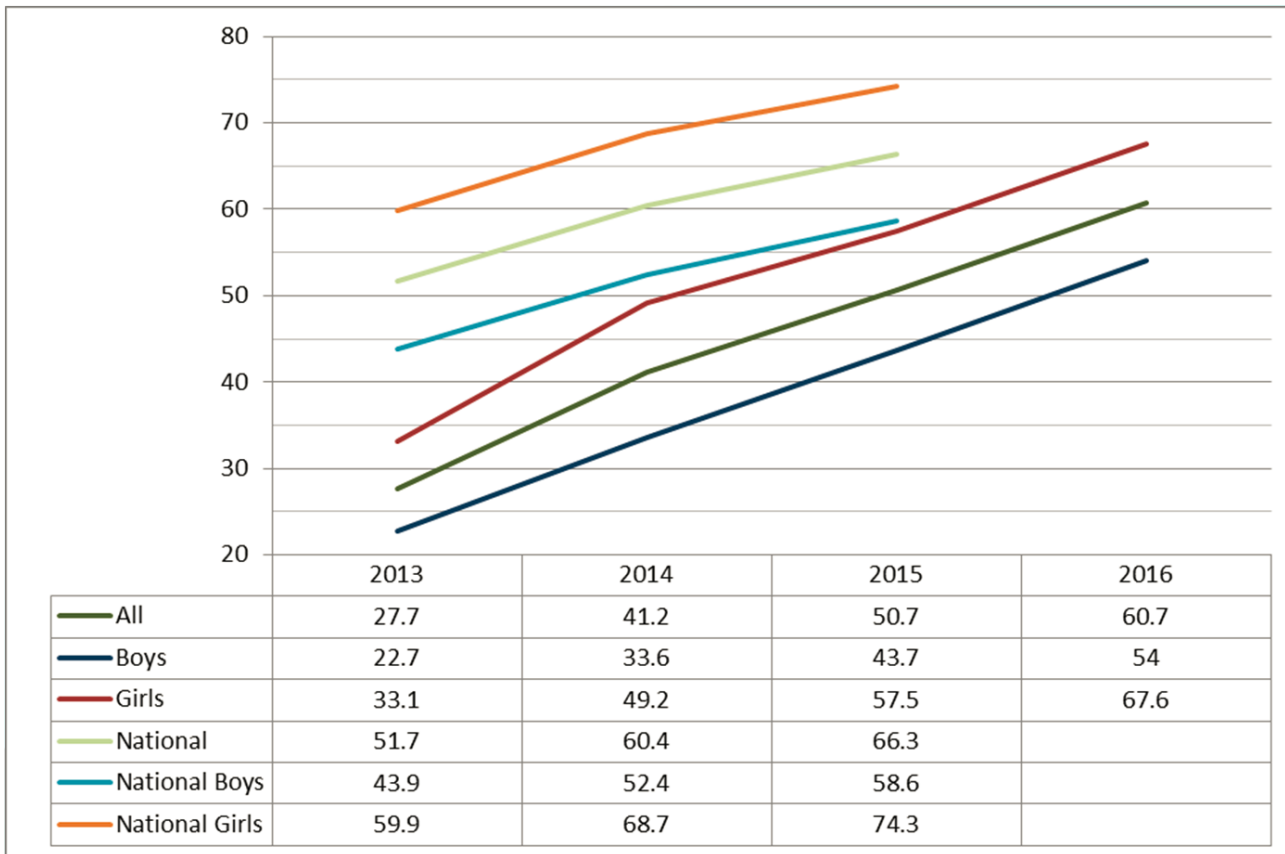
# Provision in Leicester

- Provision is improving in Early years Settings (95% good or outstanding)
- Provision is improving in Primary schools (84% good or outstanding)

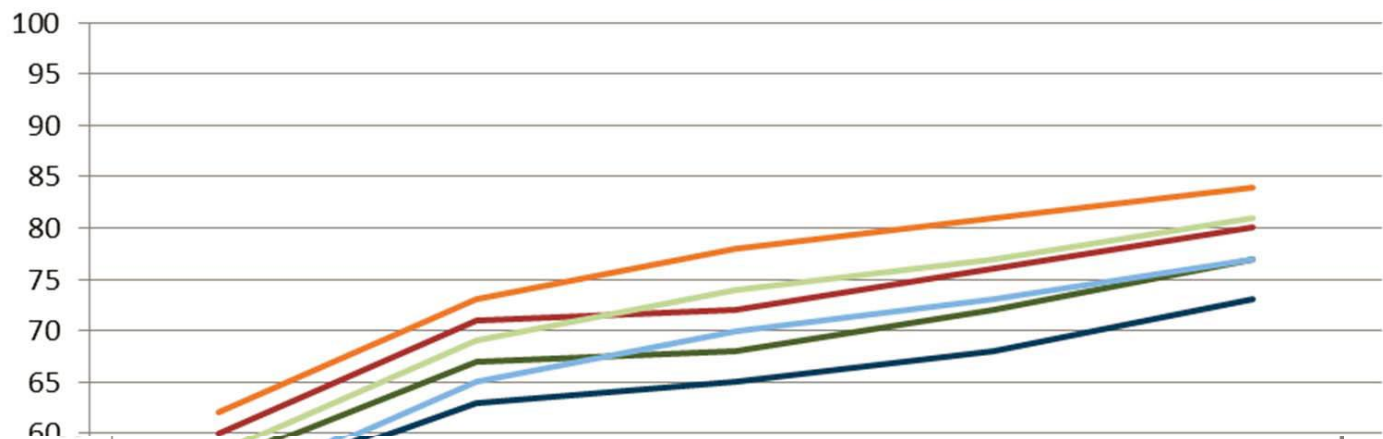
# Outcomes

- 2016 results are provisional and likely to change significantly by December
- 2016 KS1 results cannot be compared to previous
- 2015 and 2016 results show improvement but still below National on all benchmarks
- Progress is better than attainment
- Significant increase in number of pupils in L. Schools
- High percentage of new arrivals
- Low attainment on entry (nursery and primary)

# Early years Foundation Stage 2016

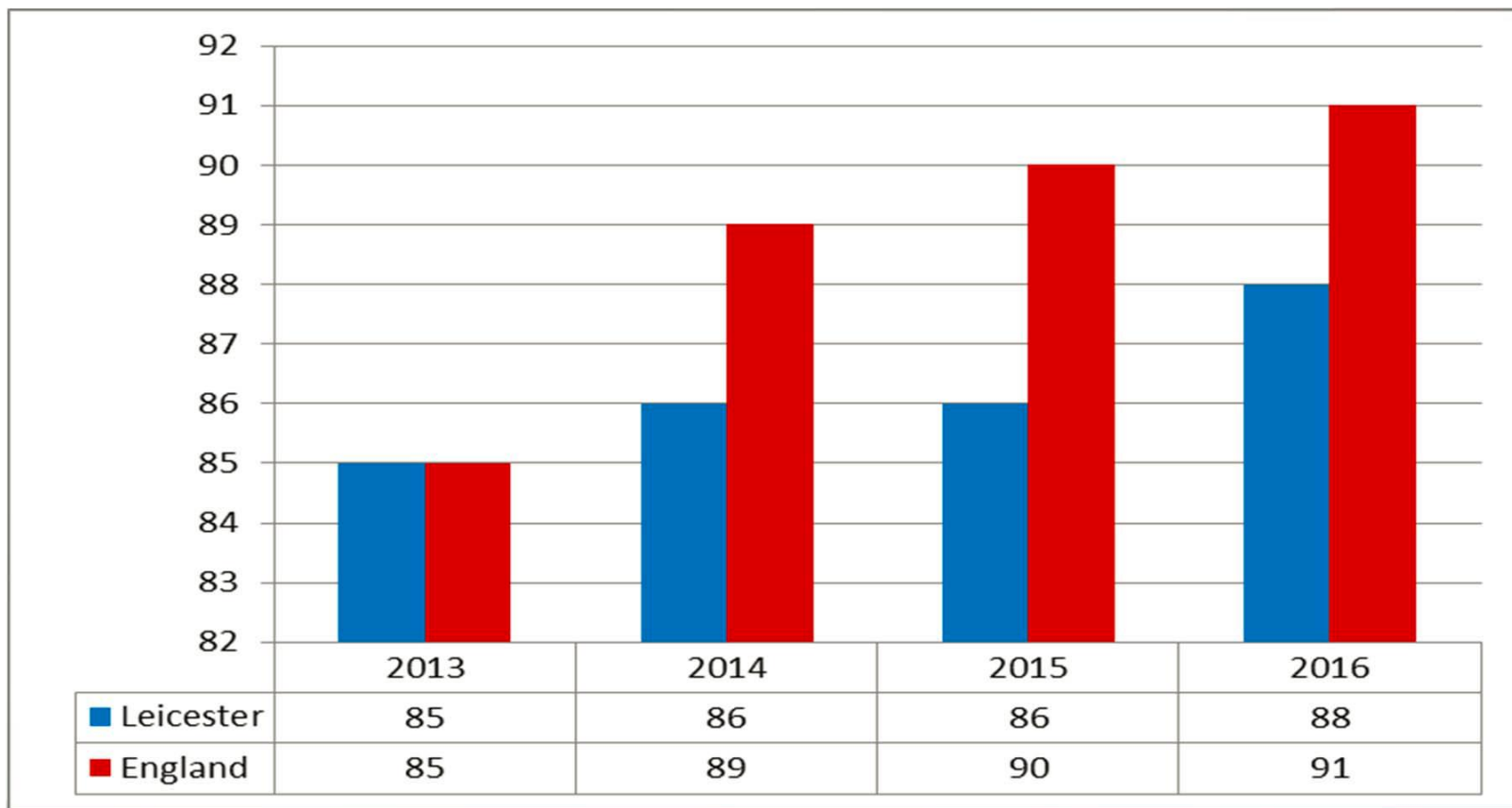


# Phonics year 1 2016 (provisional)

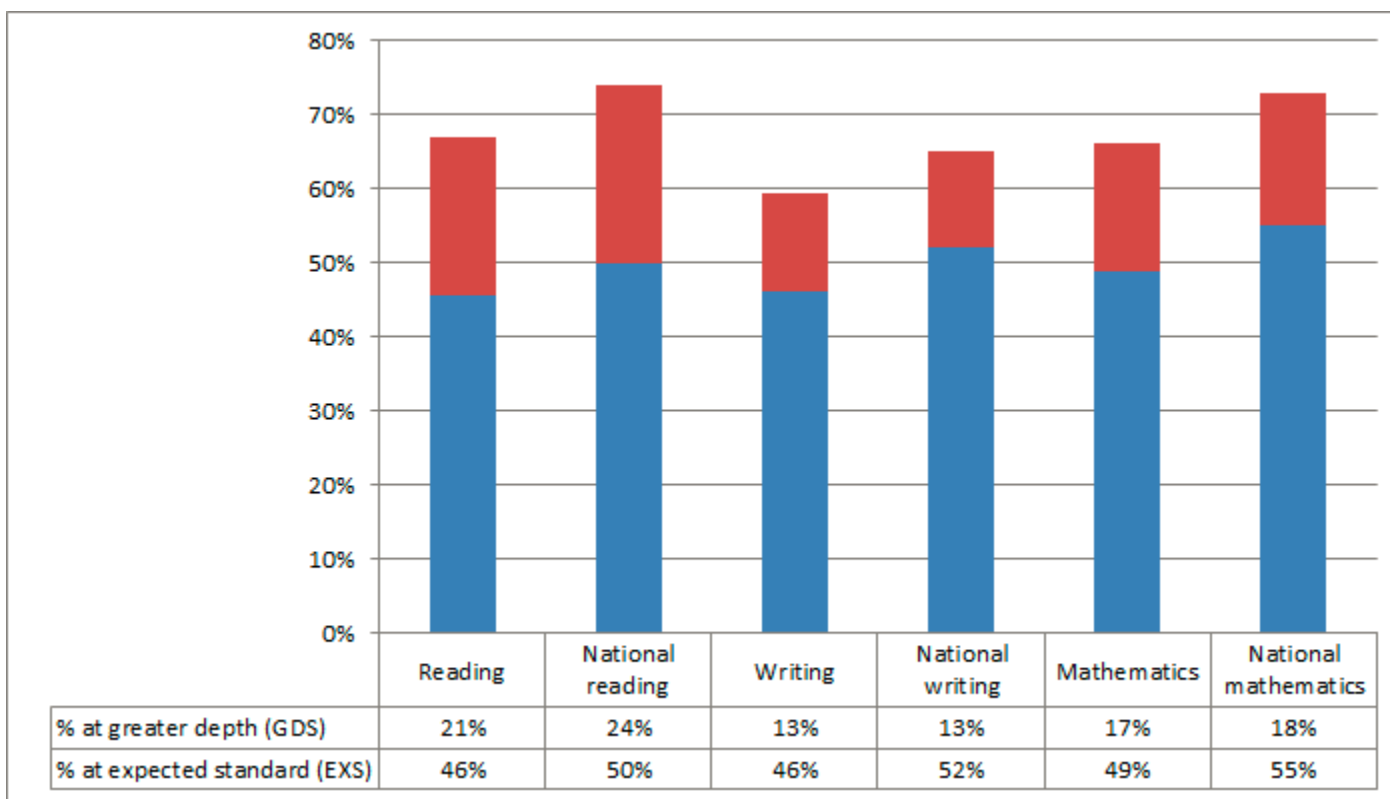


	2012	2013	2014	2015	2016
All	57	67	68	72	77
Boys	54	63	65	68	73
Girls	60	71	72	76	80
National	58	69	74	77	81
National Boys	54	65	70	73	77
National Girls	62	73	78	81	84

# Phonics year 2 2016 (provisional)



# Key Stage 1 – expected standard and greater depth (2016 provisional)



# National Performance Data

## National

- Fisher Family Trust Aspire (Oct 2016)
- Ofsted school reports (Ongoing)
- Ofsted Raise on Line reports for school and LA (November 2016)



# Leicester Performance Data

- Annual Education Performance Report (2015)
- Annual schools support report (August 2015)
- Early years Provider outcomes (September 2016)
- Early Years Foundation Stage Profile Outcomes (September 2016)
- Whatever it takes internal evaluation (Autumn 2015)

# Whatever it Takes

- Initiative funded mostly by schools
- Most of the money goes to schools as grants
- Some money used to fund a central programme offered to all schools (academies pay)
- Key element is the operation of the Knowledge Transfer Centres (KTC) aimed at improving the teaching of phonics

# Statutory moderation

- At EYFS and Key Stage 1 the LA has a duty to moderate the end of key stage assessments to ensure they are accurate and consistent

# Key people and organisations

- School leaders (TBA)
- Early years provider leaders (TBA)
- Sandra Roberts Lead Raising Achievement Adviser
- Melanie Hendy School Improvement Consultant
- Jane Ridgewell Knowledge Transfer Centre
- Liz Warren/ Peter Flack “Whatever it Takes”

# Useful Links

- Recent school Ofsted reports
- National Literacy Trust website and publications
- Whatever it Takes website
- Ofsted thematic reports eg “Ready to Read”
- Statutory Assessment and Performance Measures 2016 Paper (Sue Welford)